

HSF RoHS cAI[®] us

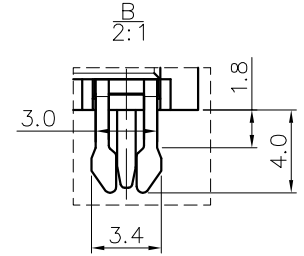
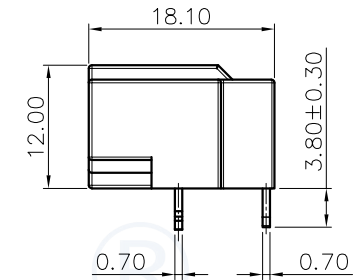
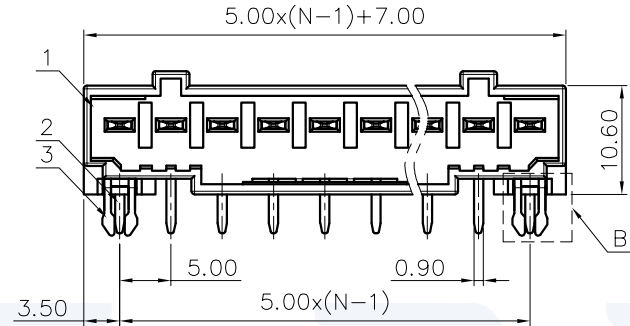
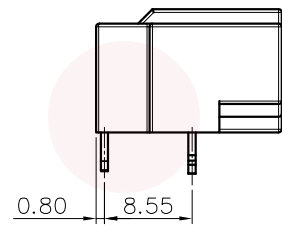
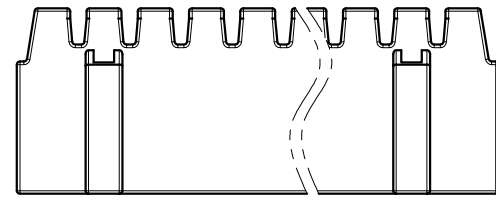
NOTES1:
 UL Standard
 1.Rated voltage/current : 300V / 14.5A
 2.Withstanding voltage : AC1600V/1Min.
 3.Ratings :Use group B 300V AC/DC
 Use group D 300V AC/DC

NOTES2:
 1.Dimension shall be interpreted per ASME Y14.5-2009
 2.Pitch : 5.0mm, Poles : N=02~14P
 3.Operating temperature: -40°C~+105°C
 4.Undimensioned tolerances:

Pitch range in mm			Nominal dimension range in mm					-	∩	□
To	Over	To	To	Over	Over	Over	Over	0.1/10		
6	6	10	30	30	60	100	150			
±0.15	±0.20	±0.30	±0.30	±0.50	±0.70	±1.00	±1.30	±2'		

5.RoHS Compliance

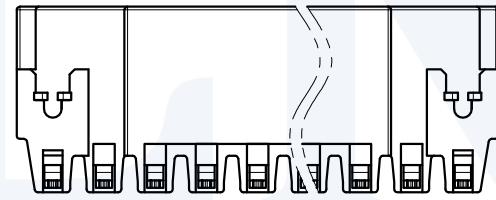
REVISION RECORD				
REV	ECN	DESCRIPTION	DRFT	DATE



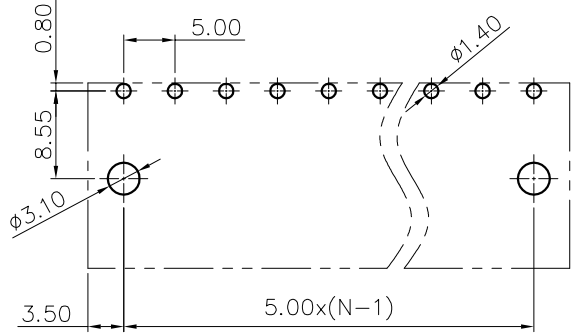
Ordering Information

JL9EDGRC - 500 XX B 0 1

- Pitch 500=5.00PH
- No.of pins 2P~15P
- Housing Color
 B=Black
 G=Green
 U=Blue
 R=Red
 W=White
 Y=Yellow
 O=Orange
 E=Grey
- Packing
 O=Pe bag
 A=Tray
 T=Tube



PCB LAYOUT(5-14P)



4	Pin	Copper alloy	Sn Plated
3	Pin	Copper alloy	Sn Plated
2	Pin	Copper	Sn/Au plated
1	Housing	PA66+GF	UL94V-0
ITEM	NAME OF PART	MATERIAL	NOTES

DRAW	LICHAO LIU	SCALE	FIT
CHECK	LICHAO LIU	UNIT	mm
APPROVE	G. Y. L	SIZE	A4
		SHEET	1/1
		PROJ.	☉

JILN[®] 东莞市锦凌电子有限公司
 DONGGUAN JINLING ELECTRONIC CO.,LTD

PART NO.	JL9EDGRC-500XXB01
TITLE:	JL9EDGRC-5.0公端/接线端子台